



 automotive

www.farecla.com



AUTOMOTIVE SYSTEMS

Tel: 01920 465 041
Web: www.farecla.com

DEFECT DEFECT REMOVAL

Identify the paint defect.

Select from the options below to remove the defect & prepare the surface for compounding.



1 Sand using Deburring Stone
PART # 1542200



2 Sand using Abrasive Disc
PART # 1512000

P20000



1 Sand using Abrasive Disc
PART # 1512000



2 Sand using Abrasive Disc
PART # 1512000

P12000



1 Sand using Abrasive Disc
PART # 1512000



2 Sand using Abrasive Disc
PART # 1512000

P15000

P20000

COMPOUNDING

Select the Compounding system to use for either Wet or Dry use.

WET



1 Attach foam to Polishing Machine
PART # A266-01



2 Apply small amount of AG1 compound to foam
PART # 502-1500



3 Spread compound using foam & start machine
PART # 15-2000A/C

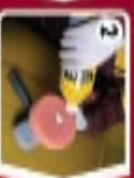


4 Adjust machine speed & continue until marks retrace

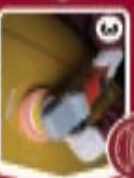
DRY



1 Attach foam to Polishing Machine
PART # 700-01



2 Apply small amount of total compound to foam
PART # 701-1500



3 Spread compound using foam & start machine
PART # 15-2000A/C



4 Adjust machine speed & continue until marks retrace

FINISHING

As a final option consider these steps for the ultimate showroom finish.

SWIRL MARKS



1 Attach polishing foam to machine
PART # A266-01



2 Apply small amount of G10 to Polishing foam
PART # 010-1000



3 Use Polishing Machine as Compounding with Compounding
PART # 15-2000A/C

ENHANCED GLOSS



1 Attach polishing foam to machine
PART # A266-01



2 Apply small amount of Gloss to foam
PART # 1520-1000



3 Use Polishing Machine as Compounding with Compounding
PART # 15-2000A/C



1 Apply small amount of Gloss to Finishing Cloth
PART # 1020-1000



2 Remove residue with Finishing cloth
PART # A261



introduction

Farécla have been supplying the Automotive Refinish Trade since the 1950's and today lead the market by offering world-class surface finishing solutions, with the aim of providing exceptional results to bodyshops and distributors. This is achieved by increasing productivity, improving turnover and providing the complete solution for all customers.

Over the years, Farécla have gained customer loyalty in many global automotive markets, and there is a commitment to provide exceptional products and to fully train customers so that they will achieve perfect results. It's commitment to and investment in Research and Development is of great importance. This, coupled with strong relationships with major global paint manufacturers, ensures that Farécla are at the forefront of technology and innovation in its markets.

preparation

wipes



Tack Cloth

Product Information:

The Farécla Tack Cloth is a large, high performance, tack cloth that has been specially developed for use with water based paints. However, it can still be used with solvent paints and comes packaged in a dispenser for easy storage as well as a cloth safe tray to hold partially used tack cloths. Great for preparing a surface to prevent dust and other airborne particles from contamination before painting.

Available in a dispenser of 30

Benefits:

- Quick and easy to use
- Low tack so ideal for use on water based paints
- Individually wrapped to prevent contamination
- Large size so can be used for more than one job

Part No. 1050030



Guide Dust

Product Information:

An economical way to reduce solvent usage in the bodyshop, Guide Dust is a non-solvent, environmentally friendly alternative to traditional aerosols for guide coating. Easy to apply using the applicator supplied with each 100g pot this is a quick and cost effective system for highlighting imperfections such as pinholes and scratches in fillers and primer. Ensures body work is flat and body styling contours are true prior to the final application of paint.

Benefits:

- Very easy to apply
- 100g pot - double the volume of other brands
- No masking required - time saving
- Free applicator with every pot - no separate purchase required

Part No. 1100100

rectification

abrasives



Abrasive Film Discs - 150mm

Product Information:
Available in 3 grades P1200, P1500 and P2000, Farécla abrasive discs have a durable film backing and 7 holes for dust extraction 150mm in diameter. P1200 should be used for removal of orange peel and tougher defects. P1500 should be used for removal of general defects. P2000 should be used for removal of lighter defects. Recommended to be used with the Farécla Back Up Pad and Farécla Interface Pad. To achieve the best finish follow up with either Total or G3 compounds. Back Up Pad

and Farécla Interface Pad. To achieve the best finish follow up with either Total or G3 compounds.

Benefits:

- Extremely durable - long life
- Covers large areas easily and quickly
- Anti-clogging properties, long-lasting - durability
- Consistent scratch pattern - perfect finish

P1200 **Part No.** 1011200
P1500 **Part No.** 1011500
P2000 **Part No.** 1012000



Abrasive Film Discs - 75mm

Product Information:
Three grades of 75mm diameter Abrasive Film Discs sharing the same resin bond construction and performance characteristics as their 150mm counterparts. Supplied in boxes of 50 discs

Benefits:

- More durable than other leading brands
- Consistent and even scratch pattern
- Anti-clogging properties
- Ideal for SMART repairs

P1200 **Part No.** 1081200
P1500 **Part No.** 1081500
P2000 **Part No.** 1082000



Interface Pad

Product Information:
The Farécla Interface Pad is recommended to be used on any surface to ensure that even sanding is performed. Also has 7 holes for dust extraction. 150mm diameter

Benefits:

- Excellent dust extraction
- Enables consistent scratch pattern

Part No. 1030002



Back Up Pad

Product Information:
The Farécla Back up Pad has 6 different attachments so it will fit most sanding machines world-wide. Its foam base also ensures an even pressure is distributed over the surface. 150mm diameter

Benefits:

- Excellent dust extraction
- Enables consistent scratch pattern
- Can be used on most sanding machines

Part No. 1030001

To be used with:

- Abrasive Film Disc P1200
- Abrasive Film Disc P1500
- Abrasive Film Disc P2000
- Interface Pad

rectification

abrasive ancillaries



Waterproof
Sheets -
P1200/
P1500/
P2000



Flattening
Block

Product Information:

Available in 3 grades P1200, P1500 and P2000. P1200 should be used for removal of orange peel and tougher defects. P1500 should be used for removal of general defects. P2000 should be used for removal of lighter defects. Recommended to be used with the Farécla Flattening Block. To achieve the best finish follow up with either Total or G3. 230mm x 280mm.

Benefits:

- Can be used with wet/dry systems
- Can be used for many jobs
- Durable
- Anti-clogging properties, long-lasting
- Consistent scratch pattern

P1200 **Part No.** 1021200
P1500 **Part No.** 1021500
P2000 **Part No.** 1022000

Product Information:

Ideal for hand use with Farécla Waterproof sheets. Durable and robust as well as comfortable to grip.

Benefits:

- Durable
- Easy to use

Part No. 1060002

To be used with:

- Waterproof Sheet P1200
- Waterproof Sheet P1500
- Waterproof Sheet P2000



Denibbing
Rose



Denibbing
Block

Product Information:

Available in P2000 grade, the 35mm Farécla Denibbing Rose is recommended to be used for denibbing small areas and dust inclusions. Ideal for SMART repairs and to be used with Farécla Denibbing Block. For hand use only.

Benefits:

- Ideal for flattening detailed areas
- Extremely durable
- Anti-clogging properties, long-lasting
- Even scratch pattern

Part No. 1042000

Product Information:

To be used with Farécla Denibbing Rose. The Farécla Denibbing block has a removable 35mm interface pad allowing firm pressure to be applied if necessary. Will enable a consistent scratch pattern.

Benefits:

- Foam interface pad to facilitate even pressure

Part No. 1060001

rectification compounds



Advanced
G3 Liquid
Compound/
G3 Paste



Total
Dry-Use
Compound

Product Information:

Advanced G3 and G3 paste are one-step systems that provide a fast cutting action and a high gloss finish. Use with water for optimal performance. Advanced G3 Liquid Compound combines all the reliability and other advantages of G3 Paste with a reduced clean up time when compounding by machine. AG3 Liquid is available in 500ml, 1 litre and 1 US Gallon sizes. G3 Paste is available in 250g, 400g, 1kg and 3kg sizes.

Benefits:

- Removes P1500 or finer abrasive marks quickly and easily
- Easy to use
- Fewer re-works
- Reduced clean up time
- Versatile, for hand or machine application
- Silicone free

Advanced G3 Liquid
500ml **Part No.** AG3-700
Litre **Part No.** AG3-1400
1 US Gal **Part No.** AG3-5300

G3 Regular Grade Paste
250g **Part No.** G3-250
400g **Part No.** G3-400
1kg **Part No.** G3-1000
3kg **Part No.** G3-3000

To be used with:

- Advanced G Mop Fixed Head
- Advanced G Mop Compounding Foam
- Advanced G Mop Polishing Foam
- Advanced G Mop Back Plate 6"
- Advanced G Mop Finishing Cloth 3 - pack

Product Information:

Dry use liquid compound for use on all modern refinish paint systems. The Total Dry Use System offers a one-step process to permanently remove P1500 or finer flatting marks, leaving a high gloss finish on fresh paintwork without the addition of water at any stage of the polishing process. No need to mask up doors or trim either as any throw off can easily be blown away with compressed air. Total is available in 1 litre size.

Benefits:

- No need to let paint to fully cure as will work on fresh paintwork.
- Removes P1500 or finer abrasive marks quickly and easily
- Self lubricating compound so no need to use water
- Easy to use
- Fewer re-works
- Reduced clean up time
- Versatile, for hand or machine application
- Silicone free

Part No. TOT-1500

To be used with:

- Total Dry Use Compounding Foam 2 - pack
- Advanced G Mop Back Plate with Interface Pad 6"
- Advanced G Mop Finishing Cloth 3 - pack



finishing



G10
Finishing
Compound

Product Information:

G10 Finishing compound is ideal for removing light scratches or swirl marks, especially on darker colours. Also will restore older paintwork and bring the true colour back. It is a dry-use product with self-lubricating properties, therefore no need to use water which results in reduced clean up time. For use on all paint systems. G10 is available in 500ml and 1 litre sizes.

Benefits:

- Leaves a glossy finish and an ultimate shine
- Makes discoloured surfaces look like new
- Splatter is reduced
- Versatile, for hand or machine application
- Silicone free

500ml Part No. G10-500
Litre Part No. G10-1000

To be used with:

Advanced G Mop Polishing Foam (2 pk)
Advanced G Mop Back Plate with Interface Pad 6"
Advanced G Mop Finishing Cloth (3 pk)



Glaze

Product Information:

Glaze comes in two versions, one for dark colours and one for light colours and has excellent filling capabilities for minor scratches and swirls. It will give the ultimate showroom finish, which is durable as well as breathable. Use it on fresh or cured paints. Available in 1 litre sizes.

Benefits:

- Available in two colours, to help match light or dark paints
- Provides a long lasting high gloss finish
- Exhibits water repellent properties
- Will allow the paint to breathe if not fully cured
- Clearcoat friendly

1 Litre-light Part No. FGL-1050
1 Litre-dark Part No. FGD-1050

To be used with:

Advanced G Mop Polishing Foam (2 pk)
Advanced G Mop Back Plate with Interface Pad 6"
Advanced G Mop Finishing Cloth 3 - pack



Wax Top
Liquid Wax
Polish

Product Information:

Liquid wax polish, suitable for use on all types of fully cured paintwork, to give a high gloss finish with excellent durability. Can be used on fully cured paint finishes, recommended to be used with the Advanced G Mop Finishing Cloth. Available in 500ml, 1 litre and 1 US Gallon sizes.

Benefits:

- Superb high gloss finish
- Quick and easy to apply and remove; less time spent per job
- Doesn't dry out in direct sunlight
- Hides any visible scratches or swirl marks
- Excellent durability of up to 3 months

500ml Part No. WT-500
Litre Part No. WT-1000
1 US Gal Part No. WT-3785



Black Top
Hand
Glaze

Product Information:

Black Top Hand Glaze provides a durable, high gloss showroom finish whilst still allowing fresh paint to fully cure. For hand application only, recommended to be used with Advanced G Mop Finishing Cloth. Available in 500ml and 1 litre sizes.

Benefits:

- For use on all paint systems, fresh - well cured
- Superb high gloss finish
- Will withstand final valet wash
- Does not dry up in use
- Will allow the paint to breathe when applied

500ml Part No. BT-500
Litre Part No. BT-1000

specialist products



Advanced G4 Liquid/
G4 Paste

Product Information:

Glaze comes in two versions, Advanced G4 Liquid / G4 Paste is a specialist compound, but used with the right applicators can be used to gain different results. Whether it is to be used on scratch resistant coatings, the removal of holograms or to be used on well cured paints; AG4 will give you a high gloss finish. For machine application only.

Benefits:

- Two step specialist products
- Available in a liquid and paste
- Provides a high gloss finish

Advanced G4 Liquid
500ml **Part No.** AG4-1300
G4 Paste
400g **Part No.** G4-400

To be used with:

- Advanced G Mop Fixed head
- Advanced G Mop Compounding Foam
- Advanced G Mop Lambswool Pad
- Advanced G Mop Polishing Foam (2 pk)
- Advanced G Mop Back Plate
- Advanced G Mop Finishing Cloth (3 pk)



G6 Rapid Grade Paste

Product Information:

G6 is a rapid grade paste for harder paintwork and can be used on OE and refinish medium solids. Available in 400g tubes and 3kg tubs.

Benefits:

- Removes P1500 abrasive marks quickly and easily
- Easy to use
- Fewer reworks

400g **Part No.** G6-400
3kg **Part No.** G6-3000

To be used with:

- Advanced G Mop Fixed head
- Standard G Mop
- Advanced G Mop Compounding Foam
- Advanced G Mop Back Plate
- Advanced G Mop Finishing Cloth 3 - pack



SMART Polishing Kit

Product Information:

SMART (Small to Medium Area Repair Techniques) polishing results in lower material costs, quicker clean up and less labour time. All of the above products are available individually.

Benefits:

- No need to let paint fully cure, can be used on fresh paint
- Self lubricating compound so no need to use water
- Achieves a permanent superior high gloss level
- Water miscible - any overspray of product is cleaned off easily with water
- Ideal for small area repairs

To be used with:

- SMART Repair compound 500ml
- Advanced G Mop Compounding Foam 3"
- Advanced G Mop Polishing Foam 3"
- Advanced G Mop Finishing Cloth 3 - pack

Also included is a Chicago Pneumatic compressed air polisher, an instruction guide and hard case for easy transportation.

Part No. SMT-PKIT

specialist products



Advanced
G Matt
Flatting
Liquid

Product Information:

Available as a liquid in 500ml size. G Matt has been specifically developed to thoroughly prepare a paint surface before painting and then polishing. Doesn't stain mouldings or trim and contains a detergent to remove wax and traffic film.

Benefits:

- Developed to create an even matt finish before compounding
- Less clean up time
- Ensures surface is prepared properly

Part No. AGMATT-500



Finishing
Cloths

Product Information:

Available in 2 pack sizes, 3 pack or 100 pack. Can be used on all hard surfaces and is ideal to use with the Farécla range of finishing products.

Benefits:

- Micro fibre material
- Cuts through dirt absorbing it in the fibres; doesn't just push the dirt to another area on the surface
- Absorbs moisture effectively; will hold up to 7 times its weight
- Can be machine washed up to 300 times; reduces the amount of waste and saves money
- Can be used either wet or dry
- Long lasting and durable

3x cloths **Part No.** FC-3
100x cloths **Part No.** FC-100



Autopens

Product Information:

To be used for labelling areas on a surface. Farécla Autopens are designed for identifying areas of repair to help manage the repair process. They are touch dry in 5 minutes and will wipe off easily with a damp cloth.

Benefits:

- Easy to wipe off
- Dries quickly

Part No. AP-5YW



Waterspray
Bottle

Product Information:

The Farécla Waterspray bottle is available in a 600ml size.

Benefits:

- Even dispersal of water

Part No. WSB

product list

Product	Part Number	Pack Size/measurement	Carton Qty	VOC
ABRASIVES / WIPES / GUIDE DUST				
Tack Cloth	1050030	30 x Cloths	2	0
Guide Dust	1100100	100g	12	0
Abrasive Film Discs 150mm	1011200	100 x Discs / P1200	8	0
	1011500	100 x Discs / P1500	8	0
	1012000	100 x Discs / P2000	8	0
Abrasive Film Discs 75mm	1081200	100 x Discs / P1200	8	0
	1081500	100 x Discs / P1500	8	0
	1082000	100 x Discs / P2000	8	0
Waterproof Sheets	1021200	50 x Sheets / P1200	5	0
Waterproof Sheets	1021200	50 x Sheets / P1200	5	0
	1021500	50 x Sheets / P1500	5	0
	1022000	50 x Sheets / P2000	5	0
Denibbing Rose	1042000	100 x Discs / P2000	12	0
ABRASIVE ANCILLARIES				
Interface Pad	1030002	1 x Pad / 150mm	12	0
Back Up Pad	1030001	1 x Pad / 150mm	6	0
Denibbing Block	1060001	1 x Block / 35mm	18	0
Flattening Block	1060002	1 x Block	3	0
COMPOUNDS				
Advanced G Matt Flattening Liquid	AGMATT-500	500ml (675g)	12	0
Advanced G3 Liquid	AG3-700	500ml (700g)	12	78.5g
	AG3-1400	1 litre (1.4kg)	6	157g
	AG3-5300	1 US Gallon (5.3kg)	2	597g
G3 Regular Grade Paste	G3-250	250g	24	28g
	G3-400	400g	12	44.8g
	G3-1000	1kg	12	112g
	G3-3000	3kg	4	336g
Total Dry Use Liquid	TOT-1500	1 litre (1.5kg)	6	170g
Advanced G4 Liquid	AG4-1300	1 litre (1.3kg)	6	176.8g
G4 Paste	G4-400	400g	12	38g
G6 Paste	G6-400	400g	12	44.8g
	G6-3000	3kg	4	336g
G7 Paste	G7-3000	3kg	4	747g
SMART Polishing Kit	SMT-PKIT	1 x Kit	1	0
SMART Liquid	SMT-500	500ml (695g)	12	65g
G10 Finishing Compound	G10-500	500ml (700g)	12	96g
	G10-1000	1 litre (1kg)	6	193g
Glaze Liquid for light colours	FGL-1050	1 litre (1.05kg)	6	327.36g
Glaze Liquid for dark colours	FGD-1050	1 litre (1.05kg)	6	327.36g
Black Top Hand Glaze	BT-500	500ml (700g)	12	0
	BT-1000	1 litre (1kg)	6	0
Wax Top Liquid Wax Polish	WT-500	500ml (700g)	12	119g
	WT-1000	1 litre (1kg)	6	170g
	WT-3785	1 US Gallon (3.785kg)	2	681g
APPLICATORS / ANCILLARIES				
Advanced G Mop Compounding Foam 3"	SMT-CF	5 x Foams / 3"	6	0
Advanced G Mop Polishing Foam 3"	SMT-PF	5 x Foams / 3"	6	0
Advanced G Mop Lambswool Pad 3"	AGM-LWV3	100 x Foams / 3"	1	0
Standard G Mop Compounding Head 6"	SGM-14	1 x Head / 14mm thread size	12 or 60	0
	SGM-58	1 x Head / 5/8" thread size	12 or 60	0
	SGM-16	1 x Head / 16mm thread size	12	0
Advanced G Mop Compounding Head 6"	AGM-14	1 x Head / 14mm thread size	12	0
	AGM-58	1 x Head / 5/8" thread size	12	0
	AGM-16	1 x Head / 16mm thread size	12	0
Standard G Mop Polishing Head 6"	SGM-PH14	1 x Head / 14mm thread size	12 or 60	0
	SGM-PH58	1 x Head / 5/8" thread size	12 or 60	0
	SGM-PH16	1 x Head / 16mm thread size	12	0
Advanced G Mop Compounding Foam 6"	AGM-CF	1 x Foam / 6"	12	0
Advanced G Mop Polishing Foam 6"	AGM-PF	1 x Foam / 6"	12	0
Total Dry Use Compounding Foam 6"	TOT-CF	2 x Foams / 6"	12	0
Advanced G Mop Lambswool Pad 6"	AGM-LWV6	1 x Pad / 6"	6	0
Advanced G Mop Back Plate 6"	AGM-BP14	1 x Back Plate / 14mm thread size	6	0
	AGM-BP58	1 x Back Plate / 5/8" thread size	6	0
	AGM-BP16	1 x Back Plate / 16mm thread size	6	0
Advanced G Mop Back Plate with Interface Pad 6"	AGM-BPIP14	1 x Back Plate / 14mm thread size	6	0
	AGM-BPIP58	1 x Back Plate / 5/8" thread size	6	0
	AGM-BPIP16	1 x Back Plate / 16mm thread size	6	0
Advanced G Mop Compounding Foam 8"	AGM-CF8	1 x Foam / 8"	6	0
Advanced G Mop Polishing Foam 8"	AGM-PF8	1 x Foam / 8"	6	0
Advanced G Mop Lambswool Pad 8"	AGM-LWV8	1 x Foam / 8"	6	0
Advanced G Mop Back Plate 8"	AGM-BP814	1 x Back Plate / 14mm thread size	6	0
	AGM-BP858	1 x Back Plate / 5/8" thread size	6	0
	AGM-BP816	1 x Back Plate / 16mm thread size	6	0
Advanced G Mop Finishing Cloth	FC-3	3 x Cloths	12	0
	FC-100	100 x Cloths	1	0
Autopens	AP-5YW	24 x Pens	1	0
Farréda Water Spray Bottle	WSB	600ml	25	0



For further details about Farécla Products Limited,
contact the Sales Department on

+44(0)1920 465 041

or visit our website www.farecla.com

Farécla Products Ltd

Broadmeads | Ware | Hertfordshire | SG12 9HS | England

Tel: +44(0)1920 465 041 | Fax: +44(0)1920 466 557

www.farecla.com

